

Comfort TU

Comfort TU





Article

Item no.	Description
197890	Comfort TU600 Set for sliding gates up to 600 kg: 230 V-AC motor, 16 Nm, 16 cm/s
197891	Comfort TU800 Set for sliding gates up to 800 kg: 230 V-AC motor, 29 Nm, 16 cm/s

Scope of delivery

- Motor unit with integrated control Control CBX102B
- Digital 992 Universal receiver, 868 MHz bi.linked
- 2 Digital 572 Micro hand transmitter 2-channel, 868 MHz bi.linked
- LS22 Throughbeam photoelectric sensor without connecting cable
- Spur gear module 4 pre-mounted
- Floor console

Features

Opener

- Active closing edge protection necessary
- End position setting via electronic limit switch
- Control with auto set function
- Foundation plate included

Structure and connection

- Connection (conventional) for push button
- Connection (conventional) for 4-wire photoelectric sensor OPEN and CLOSED
- Connection (conventional) for holding circuit
- Connection (conventional) for 8.2 kOhm contact strip
- Connection (conventional) for signal light 230 V-AC
- Output 24 V-DC, max. 500 mA

Operation

- Same programming logic for all controls - CBX102B, CBX10224 and CBX20224
- 2 menus: simple and advanced - for easy programming, but customizable installation

Functions

- Soft start/soft stop/soft run
- Automatic feed function
- Gate open time and prewarning time separately programmable
- Lighting duration programmable and switchable by radio
- Partial opening programmable
- Cycle counter
- Error signaling
- Simple reset function (complete reset)

Technical data

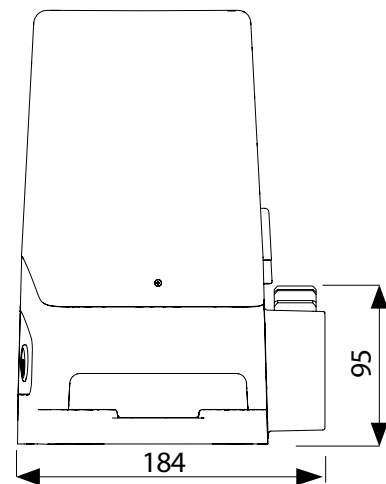
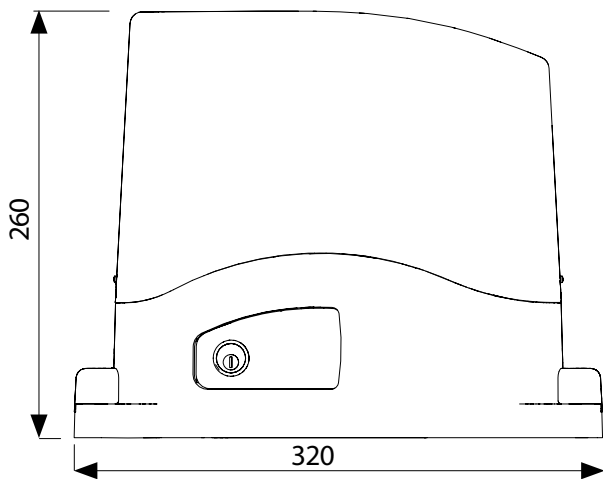
	Comfort TU600	Comfort TU900
Weight of gate leaf (max.) [kg]	600	900
Operating mode (duty cycle)	S2 - 3 min	
Output torque [Nm]	16	29
Running speed (max.) [cm/s]	16	
Modul	4	
Motor power [kW]	0.3	0.45
Motor voltage [V]	230 V/1~	
End position system	<ul style="list-style-type: none"> • Electronic limit switch 	
Protection class	IP44	

* The values given were determined for an even distribution of the cycles. A cycle consists of two movements (opening and closing) and has a deflection of 10 revolutions of the output shaft in each direction. At ambient temperatures between 40°C and 60°C, a reduction of the maximum cycles per hour by 50% must be taken into account.

** For vertically moving doors and roller shutters, a reduction of the specified pull force by a further 20% may be necessary. Possible reasons for this are, for example, additional seals, double-walled profiles or an unfavorable winding ratio where the door height exceeds the door width. In addition, it should be noted that the maximum torque only occurs after one to two revolutions when thick or high profiles are used.

*** Alternative limit switch ratios are available upon request.

Technical drawings



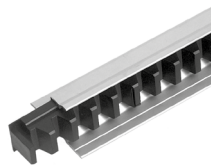
Operator specific accessories



Special 471

1 m rack, module 4, made of plastic

8052649



Special 441

2 m plastic rack module 4 in aluminum profile with cable duct

Length [mm]	Item no.	
2,000	121276	
4,000	121277	



M4 rack

1 m rack, module 4, made of steel, to fasten in place

98088

Technical data

Sliding Gate Operators TU, SU

	Comfort TU600	Comfort TU900	Comfort SU500F	Comfort SU800M	Comfort SU1200M
Weight of gate leaf (max.) [kg]	600	900	500	800	1,200
Cycles per hour (max.)*					50
Operating mode (duty cycle)	S2 - 3 min		S2 - 8 min		
Output torque [Nm]	16	29	23	26	38
Running speed (max.) [cm/s]	16		40	25	20
Modul	4				
Motor power [kW]	0.3	0.45	0.35		0.36
Motor voltage [V]	230 V/1~		24 V-DC		
End position system	Electronic limit switch		Magnetic limit switch lugs		
Protection class	IP44				
Continuous sound pressure level (max.) [dB(A)]	70				
Temperature (min./max.) [°C]	-20/55				
Dimensions (WxHxD) [mm]	320x260x184		330x330x290	330x300x210	

861, 861 S Sliding Gate Operators

	Comfort 861 S	Comfort 861		
Width gate wing (max.) [m]	8			
Weight of gate leaf (max.) [kg]	600			
Operating mode (duty cycle)	S2 - 5 min			
Push and pull force (max.) [N]	800			
Running speed (max.) [cm/s]	18			
Modul	4			
Motor voltage [V]	24 V-DC			
End position system	Reference point technique			
Protection class	IP44			
Continuous sound pressure level (max.) [dB(A)]	70			
Temperature (min./max.) [°C]	-20/60			
Dimensions (WxHxD) [mm]	330x385x178	186x1,278x198	186x1,528x198	186xx198

Technical data

SDO Sliding Gate Operators

	SDO 05-8-45	SDO 05-10-24	SDO 05-10-30	SDO 35-13-45 HD	SDO 35-20-24 HD	SDO 35-21-45 HD	SDO 35-33-24 HD	
Output torque [Nm]	80	100		130	200	210	330	
Output speed [1/min]	45	24	30	45	24			
Cycles per hour (max.)*	10			8	5	8	5	
Motor power [kW]	0.55			0.95		1.5		
Operating voltage [V]	230 V/1~; 230 V/3~; 400 V/3~					230 V/3~; 400 V/3~	230 V/1~; 230 V/3~; 400 V/3~	
Nominal frequency [Hz]	50							
Rated current [A]								
Rated current in star connection [A]	1.90	2.00		3.30		4.20	3.30	
On-site fuse protection (mains operation 400 V/3~)[A]	16							
Rated current in delta connection [A]	3.20	3.50	4.10	5.70		7.30	5.70	
On-site fuse protection (mains operation 230 V/3~)[A]	16							
Operation with CS 320 FU (frequency converter 230 V/1~)	0,75 kW			1,5 kW		-	1,5 kW	
On-site fuse protection (frequency converter operation 230V/1~) [A]	16							
Operation with CS 320 FU (frequency converter 400 V/3~)	0,75 kW			1,5 kW				
On-site fuse protection (FI operation 400V/3~)[A]	16							
Power factor cos phi	0.69	0.72		0.71				
Protection class	IP54							
Brake type	Gr. 1/1 Nm				Gr. 2/10 Nm	Gr. 2/4 Nm	Gr. 2/10 Nm	Gr. 2/4 Nm
Temperature (min./max.)[°C]	-20/60							
Continuous sound pressure level (max.) [dB(A)]	70							
Weight [kg]	15			36				

* The values given were determined for an even distribution of the cycles. A cycle consists of two movements (opening and closing) and has a deflection of 10 revolutions of the output shaft in each direction. At ambient temperatures between 40°C and 60°C, a reduction of the maximum cycles per hour by 50% must be taken into account.

** For vertically moving doors and roller shutters, a reduction of the specified pull force by a further 20% may be necessary. Possible reasons for this are, for example, additional seals, double-walled profiles or an unfavorable winding ratio where the door height exceeds the door width. In addition, it should be noted that the maximum torque only occurs after one to two revolutions when thick or high profiles are used.

*** Alternative limit switch ratios are available upon request.

Sliding Gate Operators





Comfort TU



Comfort SU



Comfort 861 S



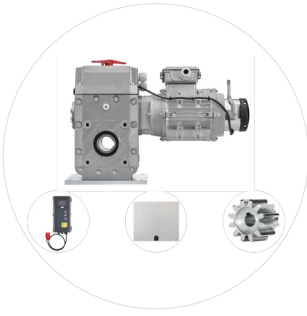
Comfort 861



SDO Sliding Gate Operators



SDO 05 - Sets



SDO 35 - Sets