

Comfort 260 accu





Article

Item no.	Description	Price
184076	Comfort 260 accu Set for garage doors up to 90 kg: 24 V-DC motor, 550 N, 16 cm/s	516.00 €

Scope of delivery

- Motor unit with integrated control, pre-wired, 5.000 mm
- Accu 700 battery unit with charge controller
- Charger with Euro plug type C
- Digital 921 Module receiver, 868 MHz bi.linked
- Digital 572 Micro hand transmitter 2-channel, 868 MHz bi.linked
- Universal installation set for up-and-over and sectional doors

Features

Opener

- Compact operator, the length of which can be reduced by 143 mm when rotated 90°
- DC motor: soft start and stop are gentle on the door, separately adjustable opening and closing speeds enable fast opening and standard-compliant closing
- Integrated control with illuminated LC display and easy programming
- Connections for push button, light barrier, wicket door contact, battery backup and expansion boards for retrofitting additional functions

Structure and connection

- Connection (conventional) for push button, light barrier and holding circuit
- Connection (MS-Bus) for expansion boards (boards can be integrated)
- Connection (MS bus) for handheld programmer and expansion modules
- Connection for battery backup
- Output 24 V-DC, max. 50 mA

Operation

- Marantec EOS programming
- Programming and status message via LC display
- Programming and diagnostics possible via optional external handheld programmer
- Programming and diagnostics possible via maveo pro by smartphone app

End position setting

- Electronic limit stop

Functions

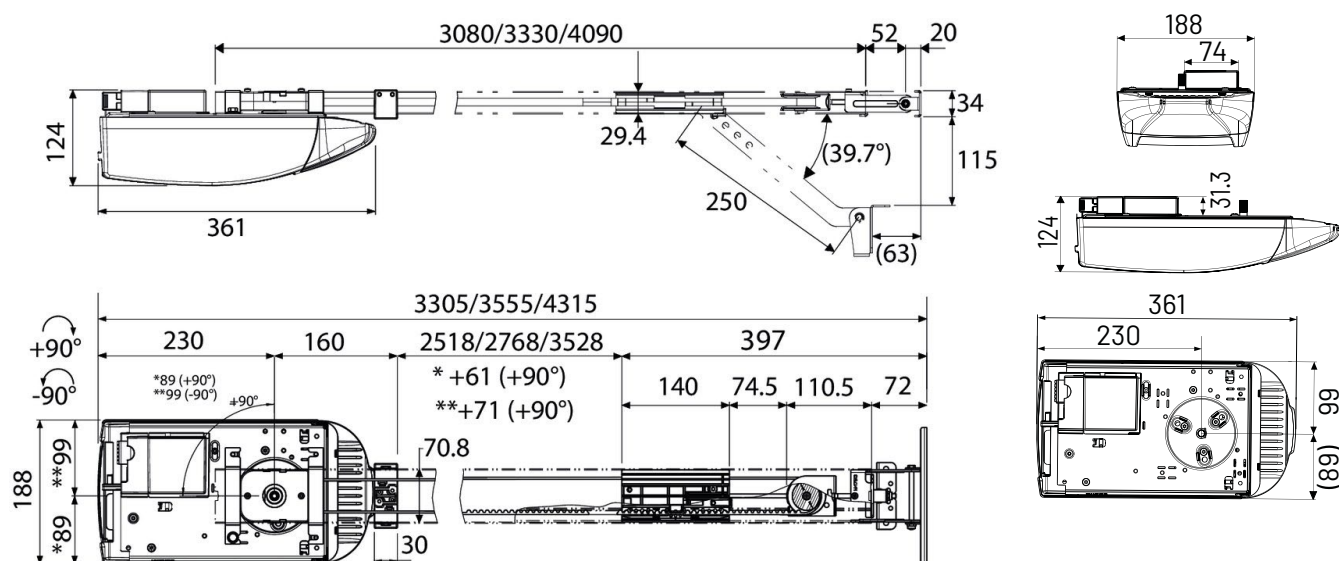
- Power-saving technology
- Soft start/soft stop/soft run
- Electronic anti-deferral device
- Blocking protection
- Runtime limit
- Reversal of direction of rotation programmable
- Backjump (relief of the closing edge)
- Automatic feed function (can only be used in conjunction with a light barrier)
- Intermediate position OPEN and CLOSED separately programmable
- Gate travel speed OPEN and CLOSE separately programmable
- Soft run position OPEN and CLOSE separately programmable
- Soft run speed OPEN and CLOSE separately programmable
- Frame function (blanking of frame light barriers)
- Programmable impulse input and output
- Cycle counter
- Maintenance interval programmable
- Error signaling with error memory
- Multi-level reset function (control, safety, radio, etc.)

Technical data

	Comfort 260 accu
Push and pull force (max.) [N]	550
Running speed (max.) [cm/s]	16
Cycles per hour (max.)*	2
Cycles per day (max.)	16
Operating voltage [V]	24 V-DC
Illuminant	8 LED module

* One cycle corresponds to two travels (opening and closing) of the gate.

Technical drawings



Area of use

	Comfort 260 accu
Width overhead doors (max.) [m]	3.5
Width of tipping and canopy gates (max.) [m]	3.5
Height of tilt and canopy gates (max.) [m]	2.25
Width of single-wall sectional doors (max.) [m]	5
Width of double-walled sectional doors (max.) [m]	3
Gate weight (max.) [kg]	90

Operator specific accessories



SZ 11

Opener rail for garage door openers, 3.08 m profile length, 0.8 mm thickness, toothed belt, 1-piece

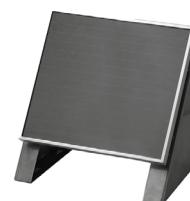
177207
131.00 €



Accu 700

Battery unit 7.2 Ah as exchangeable battery in IP20 housing

87785
291.00 €



Retrofit kit solar panel

with installation brackets and 7.5 m cable for Accu 700

83252
332.00 €

Technical data

	Comfort 260		Comfort 270		Comfort 280		Comfort 260 speed	Comfort 270 speed	Comfort 260 accu
Width overhead doors (max.) [m]	3.5		5		6		3.5	5	3.5
Width of tipping and canopy gates (max.) [m]	3.5		5		6		3.5	5	3.5
Height of tilt and canopy gates (max.) [m]	2.25								
Width of single-wall sectional doors (max.) [m]	5		5.5		6		5	5.5	5
Width of double-walled sectional doors (max.) [m]	3		5.5		6		3	5.5	3
Gate weight (max.) [kg]	90		165		200		110	185	90
Push and pull force (max.) [N]	550		750		1,000		650	850	550
Running speed (max.) [cm/s]	16						22	23.5	16
Cycles per hour (max.)*	2		4		6		3	4	2
Cycles per day (max.)	16		28		48		20	32	16
Operating voltage [V]	230 V/1~	260 V/1~	230 V/1~	260 V/1~	230 V/1~	260 V/1~	230 V/1~		24 V-DC
Nominal frequency [Hz]	50/60								
Rated current [A]	1.1	1	1.1	1	1.1	1	1.1		
Power consumption [VA/W/kW]	0.25 kW								0.12 kW
Power consumption in standby [VA/W/kW]	0.1 W								
Time to readiness [min]	1-5								
Motor voltage [V]	24 V-DC								
Control voltage [V]	24 V-DC								
Protection class	II								
Protection class	IP20								
Illuminant	8 LED module								
Continuous sound pressure level (max.) [dB(A)]	70								
Temperature (min./max.) [°C]	-20/60								
Dimensions (WxHxD) [mm]	190x125x360								
Weight [kg]	3.3		3.5		3.8			4.4	3.2

* One cycle corresponds to two travels (opening and closing) of the gate.

Technical data

	Comfort 360	Comfort 370	Comfort 380	Comfort 390	Comfort 390 plus
Width overhead doors (max.) [m]	3.5	5	6		
Width of tipping and canopy gates (max.) [m]	3.5	5	6		
Height of tilt and canopy gates (max.) [m]	2.25				
Width of single-wall sectional doors (max.) [m]	5	5.5	6		
Width of double-walled sectional doors (max.) [m]	3	5.5	6		
Gate weight (max.) [kg]	110	185	220	240	
Push and pull force (max.) [N]	650	850	1,100	1,200	
Running speed (max.) [cm/s]	22	23.5	18	16	
Cycles per hour (max.)*	2	4	6	18	
Cycles per day (max.)	20	32	60	300	
Operating voltage [V]	230 V/1~	260 V/1~	230 V/1~		
Nominal frequency [Hz]	50/60				
Rated current [A]	1.1	1	1.1		
Power consumption [VA/W/kW]	0.25 kW				
Power consumption in standby [VA/W/kW]	0.1 W			3.5 W	
Time to readiness [min]	1-5				
Motor voltage [V]	24 V-DC				
Control voltage [V]	24 V-DC				
Protection class	II				
Protection class	IP20				
Illuminant	2x 10 LED module			Without	
Continuous sound pressure level (max.) [dB(A)]	70				
Temperature (min./max.) [°C]	-20/60				
Dimensions (WxHxD) [mm]	360x135x335				
Weight [kg]	4.3	4.9			

* One cycle corresponds to two travels (opening and closing) of the gate.

Garage door openers





Comfort 260, 270, 280



Comfort 260, 270 speed



Comfort 260 accu



Comfort 360, 370, 380



You want your own labeling on our garage door openers?

Almost all of the following products are also available on request as a neutral variant or with your very own labeling.