

# We make the most of your parking areas

The perfect solution for  
every challenge







# Parc PA

## Long-lasting and versatile

The barriers of the Marantec PA series have been developed with the focus on longevity and performance. Due to the partially integrated lighting and many additional possibilities through having numerous accessories, the barriers are able to meet the strict requirements of the market. Whether for small or larger barrier widths: this series consists of various models that satisfy almost any situation on site - and all at an excellent price-performance ratio.



**Stable gearbox,  
shock-protected  
motor**

# Parc PA series

## For commercial and intensive private use

### PA3F

The PA3F is impressive because of a special property: speed! With only a 1-second opening time and a duty cycle of 50 %, it is also suitable for the control of busy lanes of traffic at toll booths or access drives. The maximum barrier width of 3.0 m is sufficient for any normal traffic lane. Special software makes this highly competitive performance possible.

### PA4

The PA4 makes up the solid mid-range of the PA barriers with a maximum barrier width of 4.0 m or 5.0 m, depending on the types of accessory. The performance data speaks for itself. Whether because of its opening time or duty cycle, the PA4 is equipped for the highest demands in all respects. The extensive accessories up to the 2-coloured lighting of the boom and the barrier housing complete the PA4 package.

### PA68

With the PA68, Marantec offers a barrier that meets even the highest requirements, with a barrier width of up to 8.0 m. Due to the possibility of the primary-secondary installation of 2 barriers, even barrier widths of up to 16.0 m are feasible. Of course, the PA68 also brings with it all the possibilities of the extensive accessories of the PA series. In times of rising logistics prices, the costs can already be optimised in advance by the modern, partly 2-part barrier arms and thus ensure an outstanding price-performance ratio.



two-color LED  
flashing light



# The most important properties

The PA series from Marantec gives you a choice of **three models for different requirements:**

- Each model is equipped with a **robust metal gearbox.**
- Combined with our number plate recognition, a modern access control system and other accessories, the **application areas of the barriers are almost limitless.**
- Due to the possibility of the primary-secondary installation of two barriers, even **barrier widths of up to 16 m** are feasible.
- The barriers in this series feature an **integrated double flashing light** (two colours: green/red).

## Worth knowing

- Universal: Arm can be installed both on the right and the left.
- Indirect motor connection to protect the gearbox from damage
- Adjustable opening speeds
- Integrated bi.linked 868 Mhz remote receiver
- Standard operating and access systems can be integrated



Fire department  
unlocking optional



# AXpark & AXgate

## The all-round barrier solution

The new generation of high-performance barriers sets new standards in terms of speed and efficiency. With record-breaking opening times of up to 1.3 seconds and an impressive barrier width of 8.5 meters, these barriers can handle even the heaviest traffic with ease.

Designed for demanding continuous use, they offer a wide range of applications – from parking lots and parking garages to company entrances and residential complexes to hospitals and ports. The barriers are designed for future-proof operation via Ethernet TCP/IP, RS232, and CAN and feature a robust design, low energy consumption, and minimal maintenance. Combining high performance with low operating costs, these barriers offer excellent value for money, saving you money in the long term.



Wide range of  
applications

# Serie AX

## The variants at a glance

### **AXpark P1300**

Ideal for high-traffic areas, the AXpark P1300 handles narrow passages up to 3.5 meters with ease and opens in just 1.3 to 2.5 seconds. Its compact design and low energy consumption make it the perfect solution for tight spaces, while 10 million cycles guarantee smooth operation for years to come.

### **AXpark P4000**

Whether in car parks, multi-storey car parks or on company premises, the AXpark P4000 regulates traffic flow reliably and efficiently. With a barrier width of up to 7 meters and a flexible opening time of 4 to 8 seconds, it is suitable for a wide range of applications and impresses with its economical consumption and robust construction.

### **AXgate P6000**

The AXgate P6000 is the ideal choice for demanding applications such as ports or industrial sites. It secures passageways of up to 8.5 meters and guarantees optimal traffic flow thanks to its robust construction, high cycle count, and flexibly adjustable running time.





# The most important features

The AX series offers a versatile and reliable solution for a wide range of applications, embedded in a robust stainless steel housing.

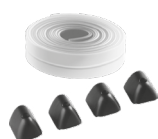
- **Innovative lighting technology:** LED strips integrated directly into the profile in a four-depth groove ensure homogeneous and clearly visible lighting. This increases the safety and aesthetics of your access control system.
- **Comprehensive connectivity:** Thanks to the integrated network and USB interface and the optionally available AXcon WLAN module, easy integration into existing systems and convenient remote maintenance are guaranteed.
- **Flexible configuration:** The freely configurable inputs and outputs allow the barrier functions to be optimally adapted to your specific requirements. The integrated loop detector ensures reliable vehicle detection.





# Accessories

## General accessories



Flexible edge protection



Fire brigade triangular key



Aluminium arm with articulated joint max. 3 m long



Red reflecting strips, self-adhesive



LED-arm lighting



Foundation plate with anchor screws



Fire brigade unlocking device



Underhang red/white



bi.linked module receiver with magnetic base antenna



Extension board for synchronous operation



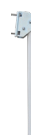
Two-way traffic control and traffic lights



Laser (Sensor H100)



Support, fixed



Hinged support

### Further information:



Discover the wide range of accessories in our product manual to find the perfect addition to your barriers. We also offer numerous accessories for the AX model on request to meet your specific requirements.

# Technical Data

## Parc PA

Parameters	PA3F	PA4	PA68
Description	Barriers with a blocking width of up to 3.0 m. The running time is 1 s.	Barriers with a blocking width of 4.0 m to 5.0 m. The running time is 3.5 s.	Barriers with a blocking width of up to 8.0 m. The running time is 6 s.
Blocking width	up to 3.0 m	4.0 m to 5.0 m	up to 8.0 m
Duration	1 s	3,5 s	6 s
Motor output	30 W	40 W	
Protection class	IP54		
Weight	62 kg	47 kg	62 kg
Dimensions (W x H x D)	450 x 1188 x 280 mm	360 x 1110 x 220 mm	450 x 1188 x 280 mm
Cycles per day	2.000	2.500	2.100
Duty cycle	50 %	80 %	
Temperature range	- 20 to + 55 °C		
Power supply	230 V ±10%; 50 - 60 Hz		
Drive voltage	Safety extra-low voltage 24 V DC		



# Technical data

## AXpark and AXgate

Technical data	AXpark P1300	AXpark P4000	AXgate P6000
Description	Barriers with a barrier width of up to 3.5 m. The running time can be set between 1.3 s, 1.8 s and 2.5 s.	Barriers with a barrier width of up to 7.0 m. The running time can be set between 4 s, 6 s and 8 s.	Barriers with a barrier width of up to 8.5 m. The running time can be set between 6 s, 8 s and 12 s.
Blocking width	up to 3,5 m	up to 7,0 m	up tu 8,5 m
Running time	1,3 s / 1,8 s / 2,5 s	4 s / 6 s / 8 s	6 s / 8 s / 12 s
Power consumption	max. 90 W	max. 25 W	
Protection class	IP54		
Weight	approx. 50 kg		approx. 120 kg
Dimensions (W x H x D)	327 x 327 x 990 mm		360 x 1100 x 417 mm
Specified number of cycles	10 million		5 million
Duty cycle	100 %		
Wind load class	4	3 or 4	4
Temperature range	- 30 to + 55 °C		
Power supply	100 - 240 V AC; 50 - 60 Hz		
Drive	Brushless servomotor		
Drive voltage	Safety extra-low voltage 24 V DC		

**Marantec Marienfeld  
GmbH & Co. KG**

Remser Brook 11  
33428 Marienfeld  
Germany

Phone +49 5247 705-0

[sales@marantec.com](mailto:sales@marantec.com)  
[www.marantec.com](http://www.marantec.com)

**Marantec UK**

Unit 10 Christleton  
Court, Manor Park,  
Runcorn, WA7 1ST  
United Kingdom

Phone + 44 1928 579050

[info@marantec.co.uk](mailto:info@marantec.co.uk)  
[www.marantec.co.uk](http://www.marantec.co.uk)

**Marantec South-Africa**

16/18 Monte Carlo Road  
Mahogany Ridge  
3610 Westmead  
South-Africa

Phone +27 31 7008260

[sales@dortech.co.za](mailto:sales@dortech.co.za)  
[www.marantec.com](http://www.marantec.com)

**Marantec Finland**

Sienitie 24  
PL 10  
00761 Helsinki,  
Finland

Phone +358 207106 600

[sales@marantec.com](mailto:sales@marantec.com)  
[www.marantec.com](http://www.marantec.com)

**Marantec Polska Sp.zo.o.**

UL. Szkolna 90  
62-070 Konarzewo  
Polska

Tel +48 61 8941741

[sales@marantec.com](mailto:sales@marantec.com)  
[www.marantec.com](http://www.marantec.com)

**Marantec Nederland B.V.**

Proostwetering 105 G  
3543 AC Utrecht  
Nederland

Tel +31 85 4863740

[sales@maratec.com](mailto:sales@maratec.com)  
[www.marantec.com](http://www.marantec.com)

**Marantec Italia Srl.**

Via Aeroporto 1/F  
44124 Ferrara  
Italia

Tel: +39 05 32 97 71 65

[sales@marantec.com](mailto:sales@marantec.com)  
[www.marantec.com](http://www.marantec.com)

