

We make the most of your parking areas

The perfect solution for
every challenge





Parking barrier systems

With our parking barriers you will reliably ensure **access to underground car parks, parking areas and works entrances** and allow authorised persons to enter in seconds. Depending on how wide, high and accessible the entrance is, different drive concepts are available. Furthermore, you have the option to **increase the efficiency of the overall system**, for example by means of a traffic light system.

Table of contents

Parc 300	4
Properties	
Features	
Parc PA	11
Versions	
Properties	
Features	
Access control	12
Accessories	14
Technical Data	16
Example Applications	18



Parc 300

Powerful and robust

The Parc 300 parking barrier system works based on the Marantec direct current technology. The Parc 300 is equipped with a reinforced gearbox, thus providing the forces necessary for large barriers. The spring assemblies are replaceable, ideal for maintenance purposes and the durability of the system as a whole. This is further enhanced by the tried and tested Marantec reference point technology. The system moves single-part barrier arms up to 8 m: with a double barrier, entrances up to 16 m can be automated. The opening time is between 8 and 15 seconds. Approx. 750 to 1,000 movement cycles are possible per day. Due to the variable left-hand or right-hand stop in just one housing, the Parc 300 is prepared for all scenarios.



Parc 300

The most important properties

A reinforced gearbox makes the Parc 300 the **ideal solution for wide entrances**.

- It impresses with its **extreme durability**, even when using long barrier arms.
- The system moves **single-part barrier arms up to 8 m**; with a **double barrier**, entrances up to 16 m can be automated.
- Due to the variable left-hand or right-hand stop in just **one housing**, the Parc 300 is suitable for **all scenarios**.
- **Approx. 750 to 1,000 movement cycles are possible per day**.



Parc 300

Features

- Exact adjustment of the end positions thanks to absolute encoder technology
- Soft start/stop function
- Automatic switch-off
- Anti-opening security device
- Blockage protection
- Automatic inlet function
- Sensitive obstacle detection with the aid of the electronic limit stop
- Inlet speed can be programmed
- Lockable housing
- Last ten error messages displayed thanks to error memory in the control system

Worth knowing

- For securing underground car park entrances, parking areas and works entrances
- Marantec reference point technology for exact gate operation in every situation
- Opening time can be set
- 24-V DC motor with gearbox usable for commercial purposes
- Standard operating and access systems can be integrated

What you can see on the images

1. Integrated x.82 control system with innovative BUS system. This allows **functions to be added at any time**. With left/right-hand stop for a flexible installation with just one design.
2. Ultimate flexibility thanks to **replaceable spring assembly**
3. The particularly robust and stable design guarantees extreme durability for years. With reinforced gearbox and replaceable springs.



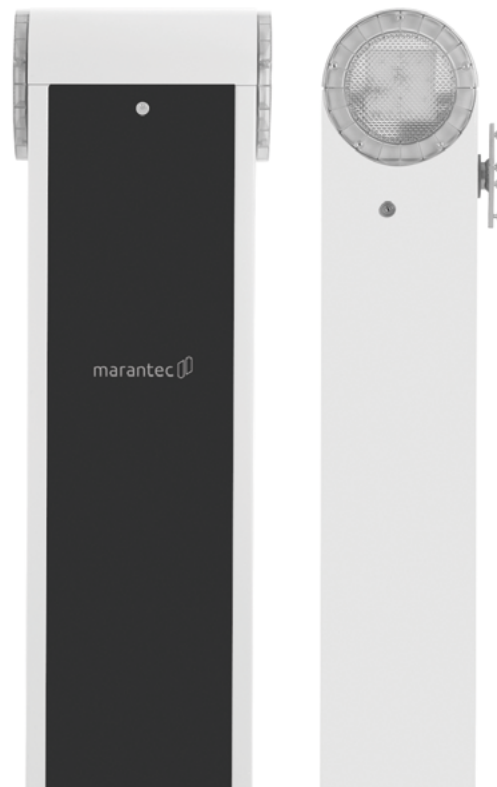




Parc PA

Long-lasting and versatile

The barriers of the Marantec PA series have been developed with the focus on longevity and performance. Due to the partially integrated lighting and many additional possibilities through having numerous accessories, the barriers are able to meet the strict requirements of the market. Whether for small or larger barrier widths: this series consists of various models that satisfy almost any situation on site - and all at an excellent price-performance ratio.



Parc PA series

For commercial and intensive private use



PA3F

The PA3F is impressive because of a special property: speed! With only a 1-second opening time and a duty cycle of 50 %, it is also suitable for the control of busy lanes of traffic at toll booths or access drives.

The maximum barrier width of 3.0 m is sufficient for any normal traffic lane. Special software makes this highly competitive performance possible.

Movement cycles per day: up to an arm length of 3 m max. 2,000 cycles.

PA4

The PA4 makes up the solid mid-range of the PA barriers with a maximum barrier width of 4.0 m or 5.0 m, depending on the types of accessory.

The performance data speaks for itself.

Whether because of its opening time or duty cycle, the PA4 is equipped for the highest demands in all respects. The extensive accessories up to the 2-coloured lighting of the boom and the barrier housing complete the PA4 package.

Movement cycles per day: up to an arm length of 5 m max. 2,500 cycles.

PA68

With the PA68, Marantec offers a barrier that meets even the highest requirements, with a barrier width of up to 8.0 m. Due to the possibility of the primary-secondary installation of 2 barriers, even barrier widths of up to 16.0 m are

feasible. Of course, the PA68 also brings with it all the possibilities of the extensive accessories of the PA series. In times of rising logistics prices, the costs can already be optimised in advance by the modern, partly 2-part barrier arms and thus ensure an outstanding price-performance ratio.

Movement cycles per day: up to an arm length of 6/8 m max. 2,100/1,100 cycles.

Parc PA

The most important properties

The PA series from Marantec gives you a choice of **three models for different requirements**:

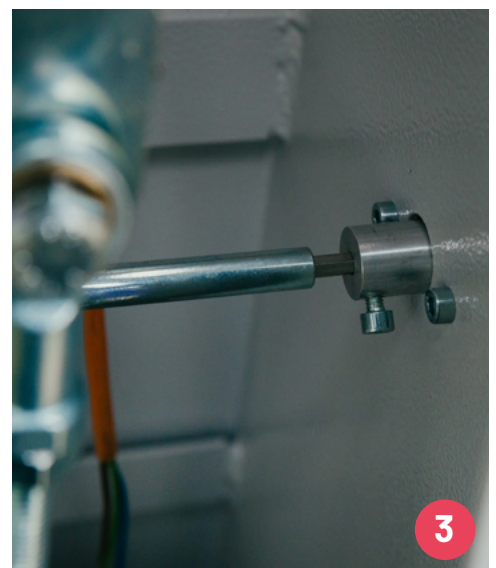
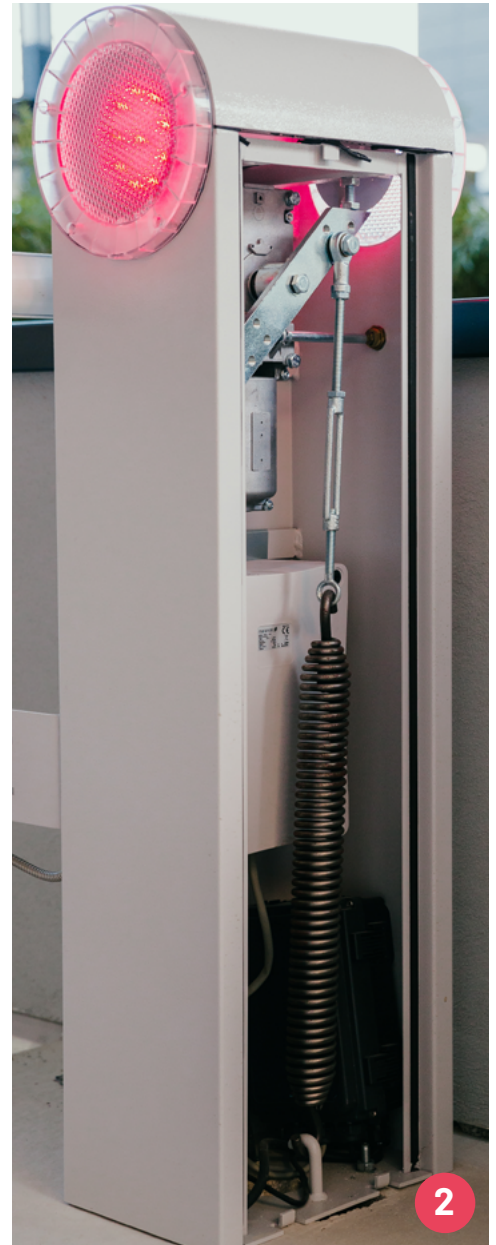
- Each model is equipped with a **robust metal gearbox**.
- Combined with our number plate recognition, a modern access control system and other accessories, the **application areas of the barriers are almost limitless**.
- Due to the possibility of the primary-secondary installation of two barriers, even **barrier widths of up to 16 m** are feasible.
- The barriers in this series feature an **integrated double flashing light** (two colours: green/red).

Worth knowing

- Universal: Arm can be installed both on the right and the left.
- Indirect motor connection to protect the gearbox from damage (PA3F, PA68)
- Adjustable opening speeds
- Integrated bi.linked 868 Mhz remote receiver
- Standard operating and access systems can be integrated

What you can see on the images

1. Double, **two-coloured LED flashing light** integrated
2. Stable gearbox and **motor protected** from shock (PA68) with sufficient room for programming
3. If required, a fire brigade unlocking device can be fitted.



Access control

LPR number plate recognition

Our LPR camera recognises the number plate and gives the **command to open** the barrier or gate. The **authorisation management** system governs which number plate may open the gate at what time.

- The LPR camera compares the number plate with an access list and can switch an output (e. g. opening command for a barrier or gate).
- It works **day and night** thanks to the integrated **infrared beam**.
- All camera settings (image, zoom, focus, recognition, access lists) can be modified by **remote access** with **browser-based software**. Simultaneous access of up to ten persons is possible.



- **Images of number plates are saved** on an SD card or server, automatic deletion can be adjusted.
- The power is supplied as 12 V DC or via Ethernet (PoE).

Laser (Sensor H100)

The H100 is a **sensor** specially developed for barriers, which was developed for **contactless protection** in the area of the barrier arm. As an additional function, the sensor is able to evaluate the area in front of the barrier as a detection zone and thus detect whether there is a vehicle in front of the barrier. This information can then be used, for example, to **open exit barriers automatically** or to activate connected devices such as the QR code reader. The integrated **detection filter distinguishes different persons and vehicles**, thus ensuring maximum security with minimum installation effort compared to conventional systems.





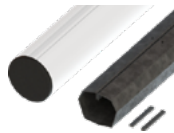
Two-way traffic control and traffic lights



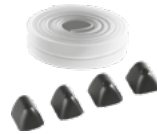
What requirements does your entrance or exit have to meet? We are happy to advise you about your individual situation. Either with a two-way traffic control system, an end position signal well in front of the parking barrier or other products: **Together we will find the best solution!**

Accessories

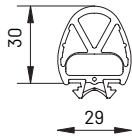
Barrier arm and lighting (depending on version)



Aluminium round arm with or without connecting sleeve and spring package



Flexible edge protection



Active safety contact strip made to length



Aluminium arm with articulated joint max. 3 m long



LED-arm lighting

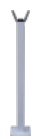


MSBUS relay module, control system for KLIGHT PARC 300



Control system for KLIGHT PARC PA

General accessories



Support, fixed



Hinged support



Fork for arm support on the side



Support for use with magnetic locking red/white



Magnetic locking set including fork support post



Underhang red/white



Synchronous operation add-on module PARC 300



Extension board for synchronous operation of 2 drives PARC PA

Accessories

General accessories



Fire brigade unlocking device



Fire brigade triangular key



bi.linked module receiver with magnetic base antenna
PARC 300



Red reflecting strips, self-adhesive



Fastening plate for barrier arm (replacement)



Foundation plate with anchor screws





Technical Data

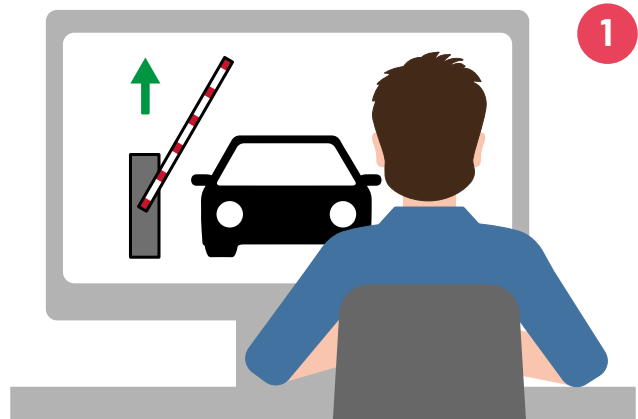
Parc PA and Parc 300

Parameters	PA3F	PA4	PA68	Parc 300
Duty cycle [%]	50	80	80	90
Max. Movement cycles per day	2.000	2.500	2.100	1.000
Opening time 90° [sek.]	1	3,5	6	8-15
Control system	CBX10224F	CBX10224	CBX10224	x.82
Power supply	230 V ±10% 50-60 Hz	230 V ±10% 50-60 Hz	230 V ±10% 50-60 Hz	24 V DC
Standby power [W]	10	10	10	2,3
Motor output [W]	30	40	40	75
Max. Motor output [W]	60	90	100	250
Red and green light integrated	yes	yes	yes	yes
Optional LED arm lighting (red, green)	no	yes	yes	yes
Sound level [dB(A)]	<= 70	<= 70	<= 70	<= 70
Protection class [IP]	54	54	54	65
Dimensions including barrier arm support (L-B- H)[mm]	450-280-1188	360-220-1110	450-280-1188	400 - 400 - 1.125
Weight [kg]	62	47	67	92
Temperature range [°C]	-20 to +55	-20 to +55	-20 to +55	-20 to +60
Max. barrier arm length [m]	3	5	8	8

Example applications

(1) Practical functions for gatekeepers

Secure and convenient monitoring: Our parking barrier systems provide control options and can transmit end position signals. These functions are always important whenever parking barriers are not directly visible or are centrally controlled.



(2) Automatically open exits

With our H100 sensor, exit barriers can be opened contactlessly. This is always an interesting option when no requirement has to be fulfilled on exit, such as a paid parking ticket - for example on staff car parks.

(3) Integration in existing systems

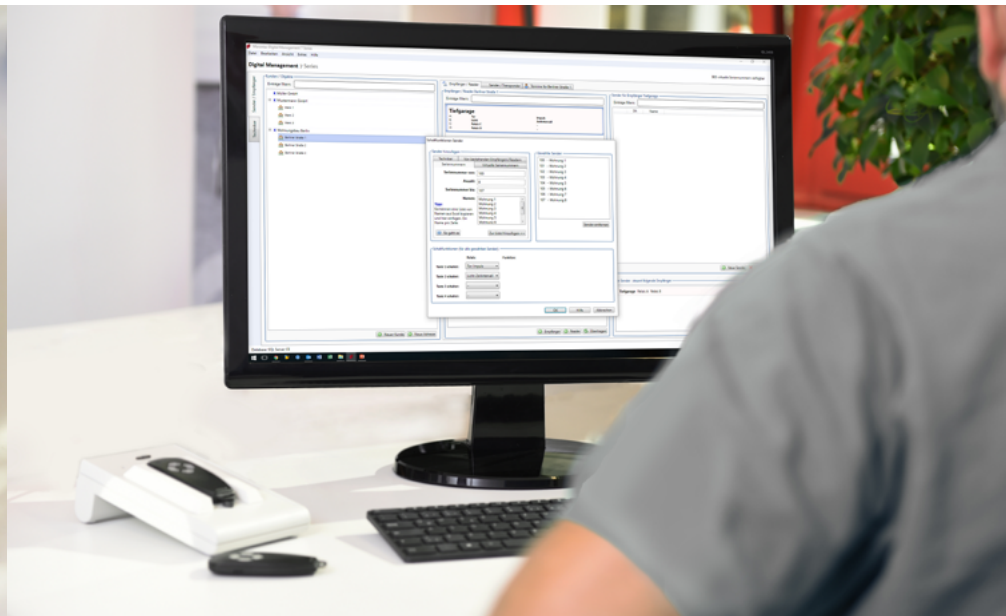
If, for example, a transponder system or remote management system is already being used for access to your company premises, you can also extend this to our parking barriers. We are happy to help you with this.

(4) Secure and simple handheld transmitter management

To allow car drivers access to the garage or parking area, operators and facility managers have a wide range of products at their disposal, from individual handheld transmitters to manageable remote systems. These products are suitable above all for parking areas that are normally used by the same people, for example in company buildings or apartment blocks. All handheld transmitters can be programmed and managed in the office as a series - even if users are subsequently expected to be added or handheld transmitters go missing.

(5) Accesses for ambulances or fire brigade vehicles

When speed is of the essence: in hospitals or at fire stations, every second counts in an emergency. It is all the more important to have a reliable parking barrier system, with which entrances and exits to be opened and closed in seconds. With the Marantec parking barriers and accessories, you are always on the safe side.



Marantec Marienfeld GmbH & Co. KG

Remser Brook 11
33428 Marienfeld
Germany

Phone +49 5247 705-0
Fax +49 5247 705-230

info@marantec.com
www.marantec.com

Ovitor Oy

Sienitie 24
PL 10
00761 Helsinki,
Finland

Phone +358 207106 600
Fax +358 207106 616

info@ovitor.fi
www.mfz-antriebe.de

**Dortech (Pty) Limited
South-Africa**

16/18 Monte Carlo Road Mahogany Ridge
3610 Westmead
South-Afrika

Phone +27 31 7008260
Fax +27 31 7008120

sales@dortech.co.za
www.marantec.com

**Marantec UK
A Division of Link Controls**

Stuart Road, Manor Park
WA7 1TS Runcorn, Cheshire
United Kingdom

Phone + 44 1928 579050
Fax + 44 1928 579259

info@marantec.co.uk
www.linkcontrols.co.uk

