

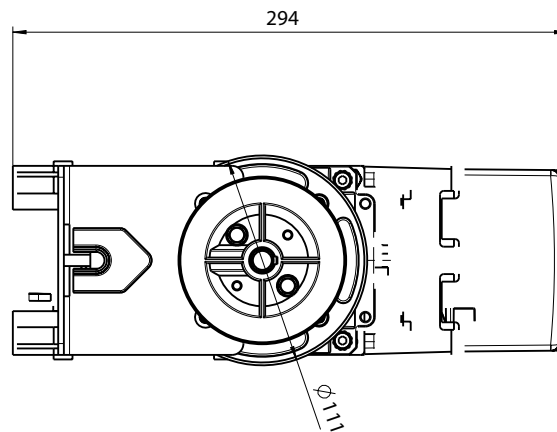
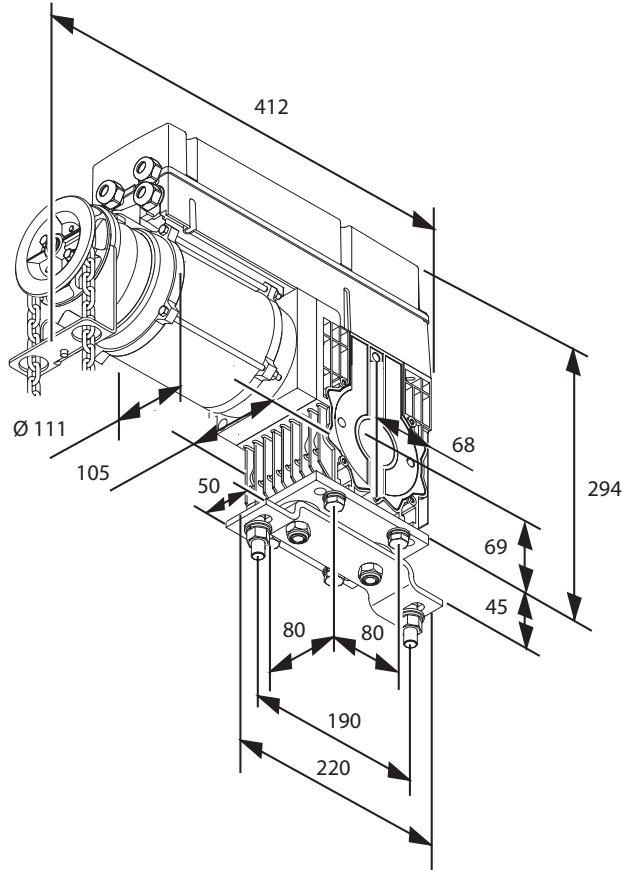
Basic package

- A Dynamic xs.plus FVR
- B Pendulum foot
- C Emergency hand chain
- D Control x.plus
- E Cable loom Control x.plus
- F Special 803 x.plus, 2 door leaf connection sockets
- G Door leaf connection cable
- H Optosensor set Rx 500 mm/Tx 500 mm
- I Cable slack device

Optional

- J Wall support
- K Pedestal bearing
- L Hoisting drum upon request
- M Wicket door contact
- N Signal light
- O Special 614-2. One-way photocell
- P Main switch

Dynamic xs.plus FVR		
Mechanical data/Type		
Drive torque	Nm	220
Nominal rotational speed	min ⁻¹	24
Max. number of revolutions, drive shaft		16
Emergency operation		Chain
Gear release		none, integrated catch device
Sleeve shaft diameter	mm	25.4/30/31.75
Mechanical data/Catch device/Type		
Inspection No. TÜV SÜD		TorFV 8/140
Type		Safety gear with one-way catch device
Maximum catch element	Nm	1278
Load element	Nm	300
Maximum catch angle	degree	54
Direction of rotation in catching		optional
Maximum tolerable coil diameter	mm	636
Electrical data/Type		
Nominal voltage	V	Y 3N~ 400/230 / Δ 3~ 230
Nominal frequency	Hz	50
Current input	A	Y 2.4 / Δ 4.7
Motor output/power	kW	1.1
Motor connection period (ED)	%	60
Power supply for external elements	V	24/200 mA
Protection category		IP 65
Protection class		I
Physical data/Type		
Dimensions	mm	112 x 415 x 293
Weight	kg	18
Temperature range	°C	- 20 to +60
Installation versions		Direct attachment or flanged mounting
Recommendation for operation Dynamic xs.plus FVR/allocation to hoisting drum/door area/weight		
Type		
Coil shaft ADM – hoisting drum ADM*	mm	133 164 - - 159 190
Door area, max.	m ²	20 - - 16
Door weight, max.	kg	220 - - 190
*up to a maximum of Ø hoisting drum = Ø in door position CLOSE, exterior cable, Vmax. appr. 240 mm/s ⁻¹		



Dynamic xs.plus FVR

Operator system for springless sectional doors

2.37



NEW



Dynamic xs.plus FVR

Article	Article no.	Price each
Dynamic xs.plus FVR 230/400V/3PH 30/1.1 KW/IP 65 220/24 KE	88 432	
25.4/1.1 KW/IP 65 220/24 KE	88 535	

Package

- Dynamic xs.plus FVR with integrated catch device
- Motor-Sleeve shaft 25.4 | 30 | 31.75 mm
- Sales unit: 1 no.

Function/Application

- For springless sectional doors
- | | | |
|-------------------------------------|------------------|------------------|
| Coil shaft-ADM – Hoisting drum-ADM: | 133 164mm | 159 190mm |
| Door area max. | 20m ² | 16m ² |
| Door weight | 220kg | 190kg |

Control units: Control x.plus

- Integrated controls with power element in the Dynamic xs.plus
- Marantec bus system with constant surveillance of all safety components such as photocells, optosensor closing edge or electrical connecting block 8.2 kΩ and connecting block door leaf hold circuit (cable slack device, wicket door contact)
- A potential-free contact for use as required, e.g. for connecting a signal light, end position signalling (programmable)
- Multi-reference point technology with electronic end position setting
- Only in combination with Control x.plus as command bus with multiple connection options

Pendulum foot Dynamic xs.plus FVR

Article	Article no.	Price each
Pendulum foot for Dynamic xs.plus FVR	88 434	

Package

- Pendulum foot
- Mounting material
- Sales unit: 1 no.

Function/Application

- For fastening the operator to the wall support, and to reduce the forces during door operation.

Technical Data/Specifications

Dimensions	220 x 100 x 45 mm
Weight	1.9 kg

Accessories

2.38 Special



Wall support for Dynamic xs.plus FVR

Article	Article no.	Price each
Wall support for Dynamic xs.plus FVR	8 010 779	

Package

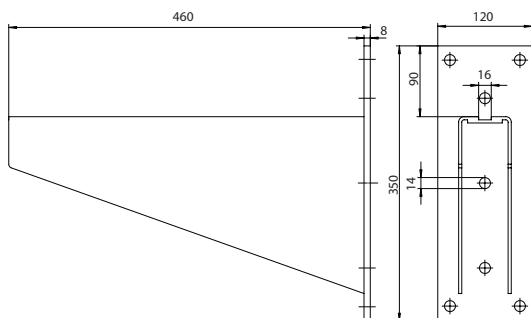
- Wall support
- Sales unit: 1 no.

Function/Application

- For mounting / fastening of the sectional door to the wall
- For mounting of operator and pedestal bearing

Technical Data/Specifications

Dimensions	460 x 120 x 350 mm
Weight	7.2 kg
Weight bearing capacity	250 kg



Pedestal bearing 30 mm

Article	Article no.	Price each
Pedestal bearing 30 mm	8 010 781	

Package

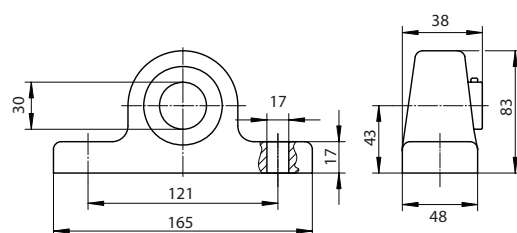
- Pedestal bearing 30 mm
- Sales unit: 1 no.

Function/Application

- As counter balance to operator on the opposite side

Technical Data/Specifications

Dimensions (L x W x H)	165 x 48 x 83 mm
Weight	1.2 kg



Information

Dynamic xs.

Control

Special

Digital

Command



Control x.plus

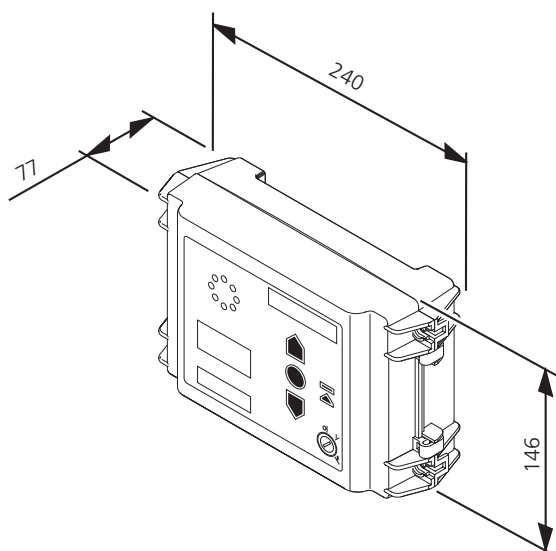
Article	Article no.	Price each
Control x.plus Control unit will be replaced by Control x.plus Control unit	81 298	
	87 671	

Package

- Control unit Control x.plus
- Sales unit: 1 no.

Technical Data/Specifications

Dimensions (W x H x D)	240 x 146 x 77 mm
Weight	1.2 kg
Power supply for external elements	200 mA / 24 V
Protection category	IP 65
Cabling	system cabling/conventional



Function/Application

- Operating controls for the Dynamic xs.plus operator system with integrated Marantec bus system as command bus
- EOS programming structure
- Marantec carousel LED display
- Variable mounting lugs
- Programming via keypad on cover
- Programmable relay output (signal light, end position)
- Half OPEN push-button on housing cover
- Miniature lock with function, control voltage IN/OUT, activation of programming, locking of keypad on cover
- Automatic recognition of any expansion modules connected, e.g. remote module, traffic control system
- Connections for conventional buttons and command units
- Connection for the MarantecDiagnosticSystem
- Connection for remote module
- Connections for Marantec photocells (2-wire technique)
- Connection for spiral cable / door leaf safety (blue plug)
- Connection for photocell with potential-free normally closed contact

Optional extension possibilities

- In the housing of the Control x.plus controls
- Remote module
- Photocell expander for the connection of a second safety photocell
- In a separate extension housing unit:
 - Module for traffic control
 - Module for special functions
 - Module for roll-up safety protection and extended safety functions, e.g. more photocells